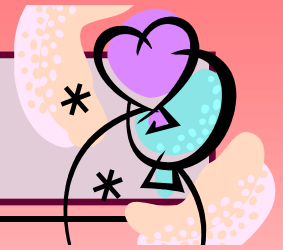




February 2012 Lunch Menu



Mon

Tue

Wed

Thu

Fri

Food	Preschooler	Elem.			
Meat or alternative	1-1/2 oz.	2 oz.	1. **SuperNachos w/ground beef, cheese & olives Refried Beans Applesauce	2 * PBJ Sandwich Veg. Soup Grapes	3 "More" Biscuits Green Beans Straw-banana Cup
Veg or fruit	1/2 cup	3/4.c			
Wh. Grain or enriched bread	1/2 slice	1 slice			
Milk, cereal, pasta	1/2 cup	1 cup			
6 ** Cheese Quesadilla Cole Slaw Pears	7 Ramen w/chicken Peas & Carrots Saltines "Cuties"	8 ** Ham & Cheese Casse role w/ Green Bens Biscuits Fabulous Fruit Salad	9 ** Taco Salad Rolls Peach Cobbler	10 * Grilled Cheese Sand. Tomato Soup Celery Sticks Taffy Apple Salad	
13 Taquitos Spanish Rice Santa fe Mixed Veg. Pineapple Tidbits	14 ** Pizza Wheels Normandy Veggies Strawberry-applesauce	15 Mashed Potatoes w/ Chicken Gravy Cole Slaw Rolls Mandarin Oranges	16 ** Spaghetti Gr. Beans French Bread Fruited Jello	17* Burritos Tossed Green Salad Heavenly Hash	
20 Presidents' Day LFS Closed.	21 Hot Dogs French fries Carrot Sticks Waldorf Salad	22 * Macaroni & Cheese Peas Bread w/butter Berry Bavarian	23* Tomato w/Rice Soup Bagels w/cr.cheese & Cucumbers Fruit Cocktail	24 ** Sloppy Joes Corn Potato chips Pears	
27** Chili & Cheese Over Rice Corn bread Carrot Sticks Peaches	28 Chicken Tater tot Casserole Peas & Carrots Biscuits	29 Egg Rolls Fried Rice w/peas & carrots Orange slices			Milk will be served w/lunches * Vegetarian menu **Veg. alternative available

